

1840

CENTURY PARK EAST

FULL FLOORS

Floor	RSF	Status
2nd	17,883	Leased
6th	17,554	Leased
15th	17,883	Leased
16th	17,883	Leased

PARTIAL FLOORS

Floor	RSF	Status
3rd Suite 350	1,515	Leased
8th Suite 801	7,935	Leased
8th-Suite 802*	6,059	Available
8th-Suite 807*	3,560	Available

*Suite 802 and 807 are contiguous for a total of 9,619 RSF.

BUILDING INFO

Building Size:	331,374 SF
Stories:	19
Year Built:	1971
Parking Ratio:	3.00/1,000 sf
Parking Rates:	\$235/mo. Unreserved \$370/mo. Reserved

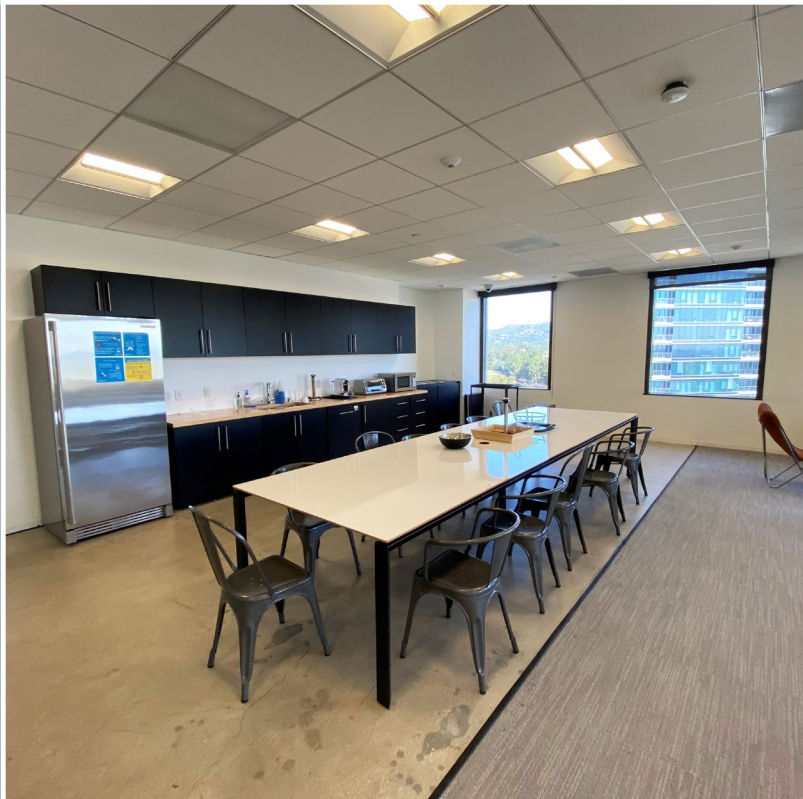
CREATIVE CENTURY CITY SUBLEASE



1840

CENTURY PARK EAST

- Move-In Ready, Plug-N-Play Space
- Strong credit sublessor
- Conference rooms, kitchen, lounge & open workstations
- On-site car wash, dog park, valet parking and food service

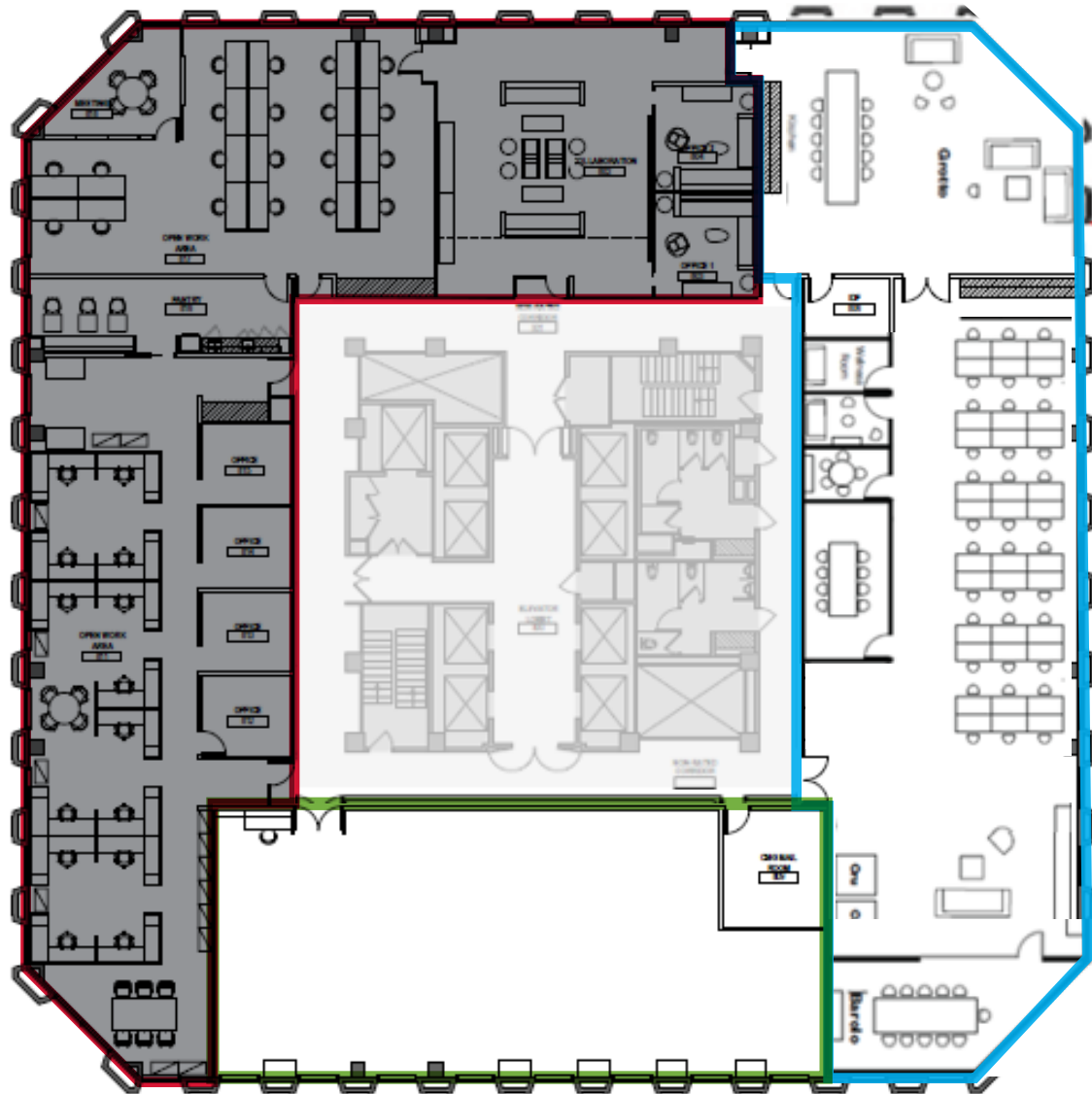


1840

CENTURY PARK EAST

FLOOR PLAN

8TH FLOOR:



SUITE 801 - 7,935 SF **LEASED**

SUITE 802* - 6,059 SF - \$3.60 PSF FSG **AVAILABLE**

SUITE 807* - 3,560 SF - \$2.80 PSF FSG **AVAILABLE**

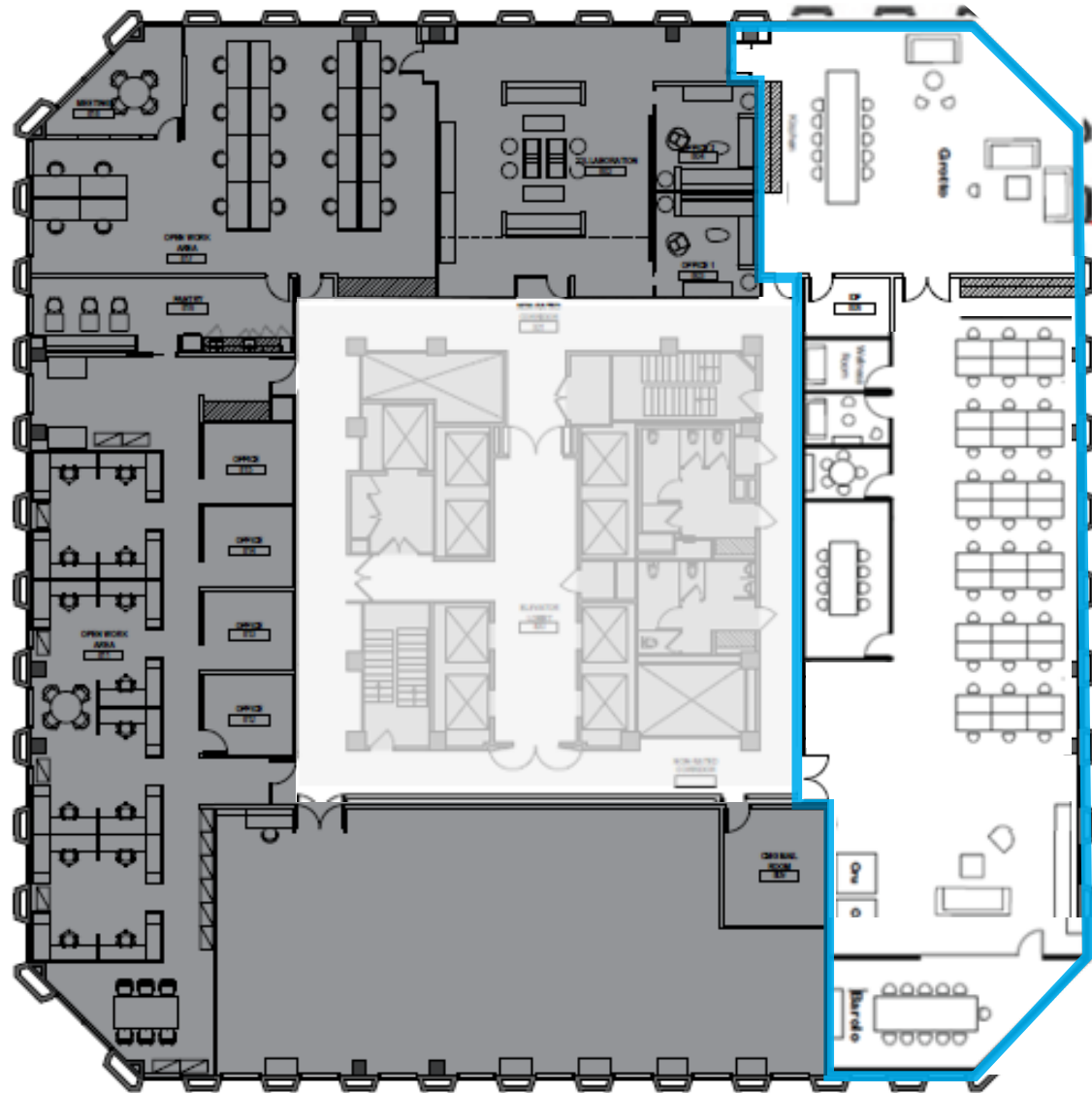
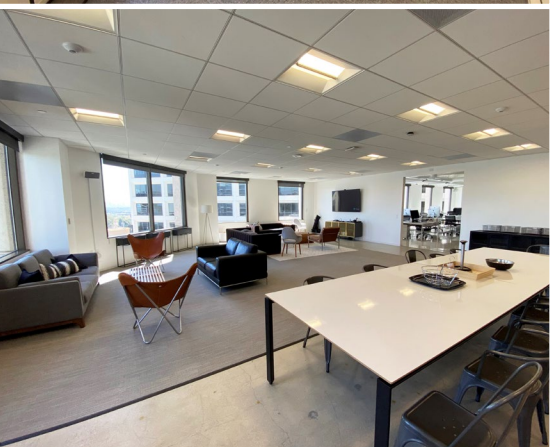
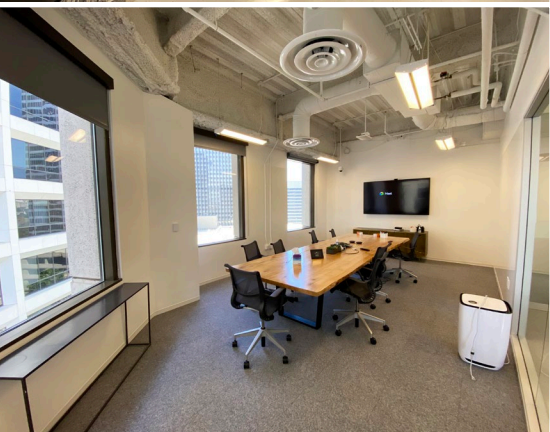
*Suite 802 and 807 are contiguous for a total of 9,619 RSF.

1840

CENTURY PARK EAST

FLOOR PLAN

8TH FLOOR - SUITE 802: 6,059 SF: \$3.60 PSF FSG



1840

CENTURY PARK EAST

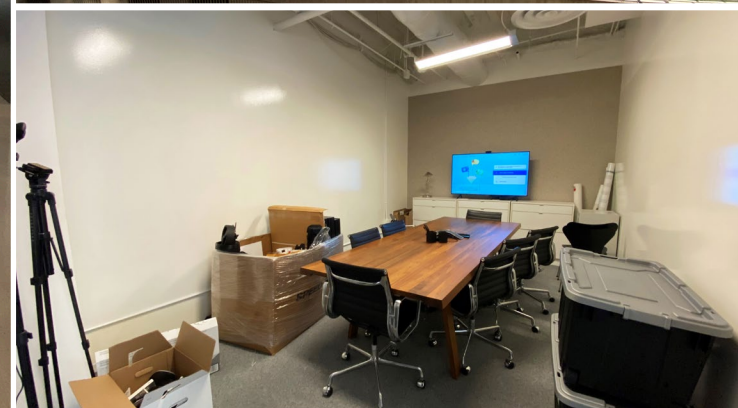
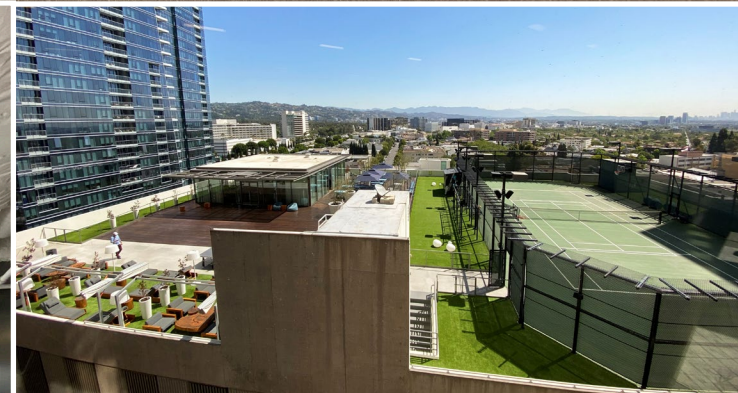
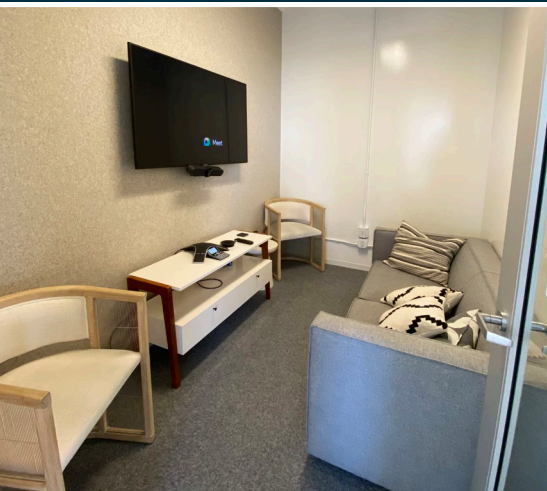
FLOOR PLAN

8TH FLOOR - SUITE 807: 3,560 SF: \$2.80 PSF FSG



1840

CENTURY PARK EAST



1840

CENTURY PARK EAST

